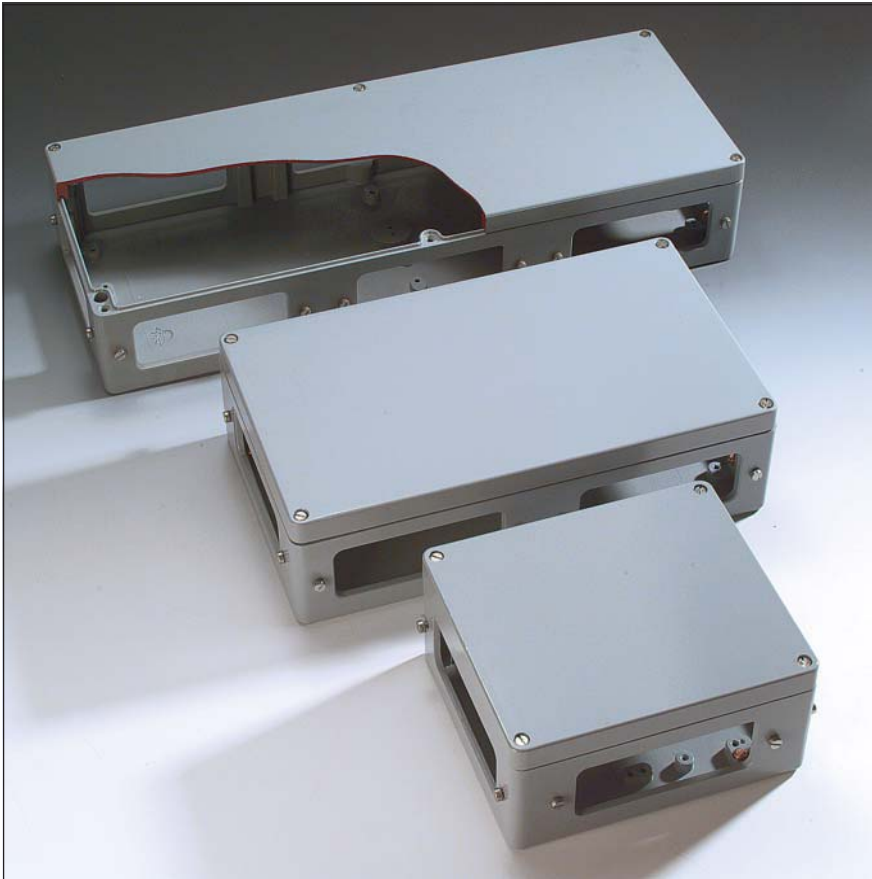




UL 50



- Robust aluminium distribution enclosure with 4, 6 or 8 flange openings
- Prepared for the installation of DIN rails

## Technical data

### Material:

DIN EN 1706 EN AC-AISI 12 (Fe)

### Painting:

powder coating

### Colour:

RAL 7001, silver grey

special colour on request

### Ingress protection:

IP 65 acc. to EN 60529

### Impact resistance:

>7 Joule, EN 50014

### Temperature range:

PUR (polyurethane) seal (std.): -40°C to +90°C

CR (chloroprene) seal: -40°C to +100°C

VMQ (silicone) seal (optional): -60°C to +130°C

### Included in delivery

Aluminium enclosures consisting of lid, seal, incl. captive +/- stainless steel screws, base with 2 or 4 earthing screws.

Flange plates are not included in the scope of delivery, they have to be ordered separately.



## Accessories



**Blind flange**  
undrilled with round seal

Order No. **10.00 60 01**



**Flange with drill holes**  
(PG and metric) on request



**Flange with cut-out for heavy industrial connectors**

Order No.	cut-out for
<b>10.00 60 06</b>	HAN 6B or compatible
<b>10.00 60 16</b>	HAN 16B or compatible
<b>10.00 60 24</b>	HAN 24B or compatible

For further accessories please refer to the Aluminium-Standard range



Type: **11.23 40 11**

External dimensions: **230 x 400 x 110 mm**

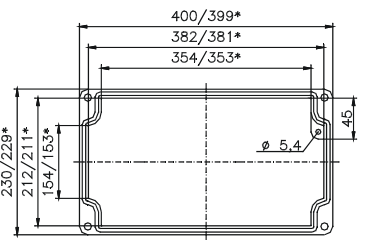
Weight: **4300 g**

DIN rail length in mm	max. fitting length in mm	Earthing rail clamp	Mounting plate (thickness in mm)	External mounting brackets	External hinge* set	EMC version	Internal hinge* set	SWB / SBG / SBGL Corr.protection	Allen lid screws	Silicone lid seal	Sealable lid screws in steel	Turn bolt fastener on request	Quick lock
TS 35	335	25		•				•	•	•	•		
358	335	25		•				•	•	•	•		

Maximum number of cable glands to *DIN 50262\**

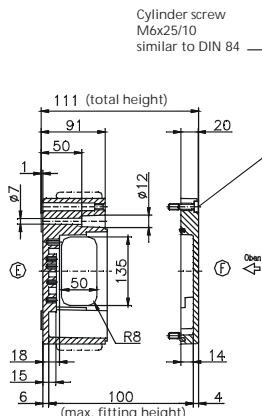
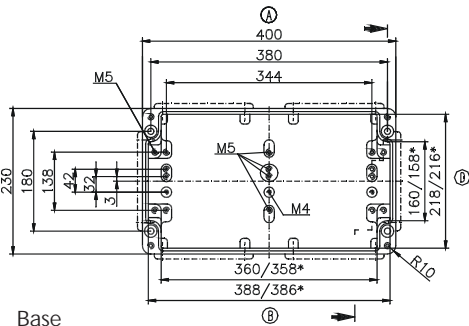
M	Corner dim.	Side		PG	Corner dim.	Side		
		A/B	C/D			A/B	C/D	
12	17.25	246	162	7	17.25	246	162	
16	25.30	126	72	9	21.85	160	99	
20	27.60	100	68	11	25.30	112	72	
25	37.95	54	33	13.5	27.60	100	64	
32	48.30	30	20	16	31.05	77	53	
40	60.95	18	12	21	37.95	54	33	
50	69.00	15	9	29	48.30	30	20	
63	74.75	12	8	36	60.95	18	12	
					42	69.00	15	9
					48	74.75	14	8

Lid



\* = Conical form tapering downwards  
Free dimensions-tolerance to GTA 13/5 DIN 1688

Base



Type: **11.23 60 11**

External dimensions: **230 x 600 x 110 mm**

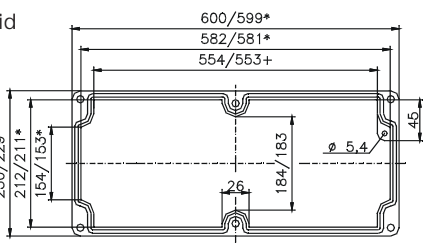
Weight: **6100 g**

DIN rail length in mm	max. fitting length in mm	Earthing rail clamp	Mounting plate (thickness in mm)	External mounting brackets	External hinge* set	EMC version	Internal hinge* set	SWB / SBG / SBGL Corr.protection	Allen lid screws	Silicone lid seal	Sealable lid screws in steel	Turn bolt fastener on request	Quick lock
TS 35	535	40		•				•	•	•	•		
558	535	40		•				•	•	•	•		

Maximum number of cable glands to *DIN 50262\**

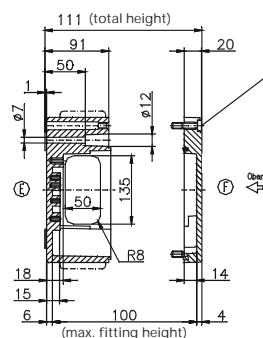
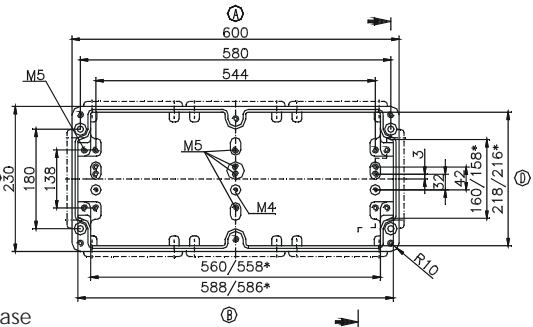
M	Corner dim.	Side		PG	Corner dim.	Side		
		A/B	C/D			A/B	C/D	
12	17.25	150	68	7	17.25	150	68	
16	25.30	76	28	9	21.85	96	42	
20	27.60	60	24	11	25.30	72	27	
25	37.95	30	12	13.5	27.60	60	24	
32	48.30	20	7	16	31.05	48	18	
40	60.95	10	4	21	37.95	28	12	
50	69.00	8	3	29	48.30	20	6	
63	74.75	6	3	36	60.95	10	4	
					42	69.00	8	3
					48	74.75	6	3

Lid



\* = Conical form tapering downwards  
Free dimensions-tolerance to GTA 13/5 DIN 1688

Base



\* Please quote mounting side