



- Polyamide / PVC hand held enclosure for MCR and automation engineering
- Large fitting space
- Variable length using profile technology
- Optional EMC version with internal enclosure in aluminium

Included in delivery

Enclosure system consisting of Polyamide internal enclosure with end covers, two side PVC cover profiles, Alucobond composite front panel, rear panel, 2 external end covers, with M 25 x 1,5 threaded hole for cable gland

Technical data

Material:

polyamide / PVC

Ingress protection:

IP 65 to EN 60529

Impact resistance:

5 Joule to EN 60079-0

Flammability:

end covers: HB / UL 94

Colour:

end covers: RAL 1021, rape yellow

PVC-profile: RAL 9005, jet black

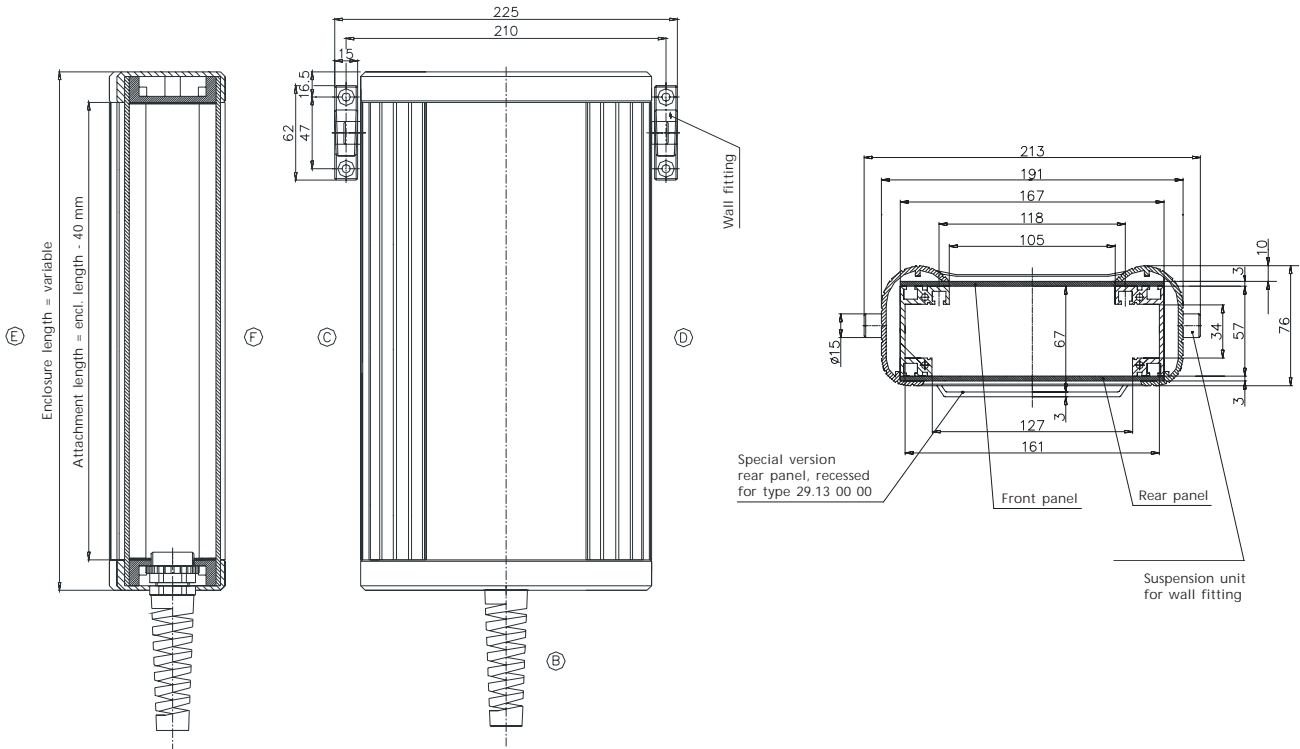
Temperature range:

-20°C to +70°C

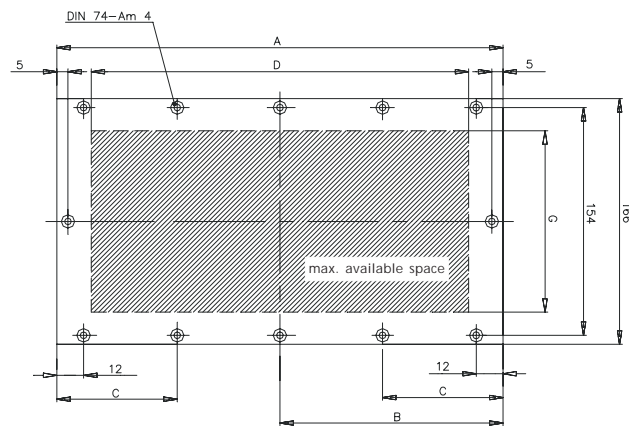
Dimensions



Standard	EMC	Dimensions	Weight (kg)
29.11 10 00	29.14 10 00	280 x 191 x 76	1.660
29.12 10 00	29.15 10 00	330 x 191 x 76	1.900
29.13 10 00	29.16 10 00	440 x 191 x 76	2.200
29.19 10 00	29.17 10 00	Special length	



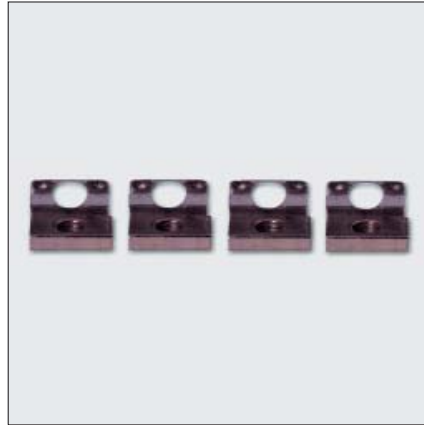
Type	A	B	C	D	G
29.11 10 00	274	-	92	240	105/127
29.12 10 00	324	162	81	290	105/127
29.13 10 00	434	217	109	400	105/127
Special size, $A \leq 300$ mm	enclosure length - 6	-	A/3	A - 34	105/127
Special size, $A \geq 300$ mm	enclosure length - 6	A/2	A/4	A - 34	105/127



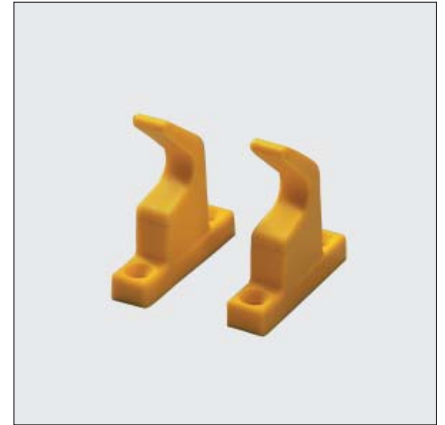
Accessories



Circuit board fitting
Set = 4 pcs with spring nuts
Order No. 29.00 00 60



Set of spring nuts
Spring nuts for internal mounting; set = 4 pcs
Order No. 29.00 00 50



Wall fitting
Order No. 29.00 00 70



Pilot with small control device



Inner T-slots offer mounting facilities on all sides



EMC version



Variable fittings