

---

# Polyester Flange

---

## *Applications*





## Technical data

### Material:

glass fibre reinforced polyester  
transparent lid: polycarbonate

### Colour:

similar to RAL 7032, pebble grey

### Ingress protection:

IP 65 to EN 60529

### Impact resistance:

>7 Joule, EN 50014

### Flammability:

enclosure: V0 / self-extinguishing, UL 94  
transparent lid: V2 / UL 94

### Temperature range:

PUR (polyurethane) seal: -40°C to +90°C  
CR (chloroprene) seal: -40°C to +100°C  
VMQ (silicone) seal: -60°C to +130°C

### Insulation:

full protective insulation acc. to VDE 0100

### Dielectric strength:

enclosure: 18 KV/mm / VDE 0303  
transparent lid: >30 KV/mm / VDE 0303

### Toxicity:

free of halogen

### Surface resistance:

enclosure: >10<sup>12</sup> Ohm / VDE 0303  
transparent lid: >10<sup>15</sup> Ohm / VDE 0303

- Plastic enclosure with openings for flange fitting for automation technology
- Combination with other polyester flange enclosures possible
- Quick release feature

### Included in delivery

Plastic enclosure of glass fibre reinforced polyester, consisting of lid, seal, quick release plastic screws, base with openings for flange fitting.

The flange plates are not included in the scope of delivery, they have to be ordered separately.

Set of threaded bushes (4 pcs.)

# Polyester Flange

## Programme range

Type	W x L x H (mm)	Flange openings	Mounting plate	Front plate on stud bolt	DIN rail* TS 35	Earthing rail	Silicone lid seal
<b>14.01 00 00</b>	170 x 270 x 135	2	<b>14.00 00 11</b>	<b>14.00 00 27</b>	<b>10.06 17 21</b>	<b>10.06 21 01</b>	<b>10.05 15 01</b>
<b>14.02 00 00</b>	270 x 270 x 135	4	<b>14.00 00 12</b>	<b>14.00 00 28</b>	<b>10.06 17 22</b>	<b>10.06 21 01</b>	<b>10.05 15 02</b>
<b>14.03 00 00</b>	270 x 540 x 135	6	<b>14.00 00 13</b>	<b>14.00 00 29</b>	<b>10.06 17 23</b>	<b>10.06 21 02</b>	<b>10.05 15 03</b>
Version with polycarbonate transparent lid							
<b>14.01 00 01</b>	170 x 270 x 150	2	<b>14.00 00 11</b>	<b>14.00 00 27</b>	<b>10.06 17 21</b>	<b>10.06 21 01</b>	<b>10.05 15 01</b>
<b>14.02 00 01</b>	270 x 270 x 150	4	<b>14.00 00 12</b>	<b>14.00 00 28</b>	<b>10.06 17 22</b>	<b>10.06 21 01</b>	<b>10.05 15 02</b>
<b>14.03 00 01</b>	270 x 540 x 150	6	<b>14.00 00 13</b>	<b>14.00 00 29</b>	<b>10.06 17 23</b>	<b>10.06 21 02</b>	<b>10.05 15 03</b>

\* TS 32 on request

## Flange and accessories (for all types)

Blind flange (for individual machining)	<b>14.00 00 20</b>	External mounting brackets (4 pcs.)	<b>10.03 11 02</b>
Threaded flange (17 x PG 11)	<b>14.00 00 30</b>	Threaded inserts (10 pcs.), additional	<b>10.03 50 02</b>
Threaded flange (14 x PG 13,5)	<b>14.00 00 22</b>	Silicone seal for flanges	<b>10.05 14 02</b>
Threaded flange (11 x PG 16)	<b>14.00 00 21</b>	Silicone seal for connection flange	<b>10.05 14 03</b>
Threaded flange (4 x PG 16; 2 x PG 21; 1 x PG 29)	<b>14.00 00 23</b>		
Connection flange	<b>14.00 00 25</b>		
Lid hinges (2 pcs.) retrofitting for all types	<b>14.00 00 26</b>		

## Terminal mounting

	Phoenix											Earth conductor connections																					
DIN rail TS 35	X	X	X	X	X	X	X	X	X	X	X																						
Voltage (V)	500	800	800	800	800	800	800	1000	1000	1000																							
Current (A)	17	24	32	41	57	76	101	150	150	232																							
Nom. cross section (mm <sup>2</sup> )	1.5	2.5	2.5	4	6	10	16	35	50	95																							
Terminal width (mm)	4.2	5.2	5.2	6.2	8.2	10.2	12.2	15.2	20	25																							
Terminal type																																	
Type	UK 1,5 N	UK 2,5 N	UK 3 N	UK 5 N	UK 6 N	UK 10 N	UK 16 N	UK 35	UKH 50	UKH 95																							
<b>14.01 00 . .</b>	55	45	45	37	28	23	19	15	11	9																							
<b>14.02 00 . .</b>	46*	37*	37*	31*	23*	19*	15*	12*	9*	7*																							
<b>14.03 00 . .</b>	110*	90*	90*	74*	56*	46*	38*	30*	22*	18*																							

\* 2 DIN rails possible

	Weidmüller											Earth conductor connections																					
DIN rail TS 35	X	X	X	X	X	X	X	X	X	X																							
Voltage (V)	500	800	800	800	800	800	800	1000	1000	1000																							
Current (A)	17	24	32	41	57	76	101	150	150	232																							
Nom. cross section (mm <sup>2</sup> )	1.5	2.5	2.5	4	6	10	16	35	50	95																							
Terminal width (mm)	4.2	5.2	5.2	6.2	8.2	10.2	12.2	15.2	20	25																							
Terminal type																																	
Type	WDU 2,5 N	WDU 2,5	WDU 4	WDU 6	WDU 10	WDU 16	WDU 35	WDU 70 N																									
<b>14.01 00 . .</b>	47	47	39	29	23	19	14	11																									
<b>14.02 00 . .</b>	39*	39*	32*	24*	19*	16*	12*	9																									
<b>14.03 00 . .</b>	93*	93*	77*	58*	46*	38*	29*	23*																									

\* 2 DIN rails possible

## Accessories



**Blind flange**  
weight: 225 g

Order No.	version
<b>14.00 00 20</b>	without holes



**Threaded flange**  
with pre-embossed PG holes  
with metric pre-embossing on request

Order No.	version
<b>14.00 00 30</b>	17 x PG 11
<b>14.00 00 22</b>	14 x PG 13,5
<b>14.00 00 21</b>	11 x PG 16
<b>14.00 00 23</b>	4 x PG 16; 2 x PG 21; 1 x PG 29



**Connection flange**  
to connect two polyester flange enclosures

Order No. **14.00 00 25**



**Lid hinges**  
set = 2 pcs., retrofittable to all polyester flange enclosures

Order No. **14.00 00 26**

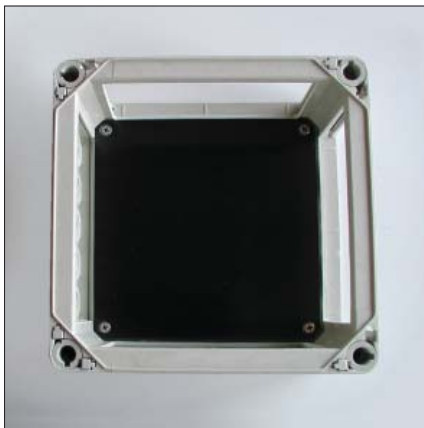
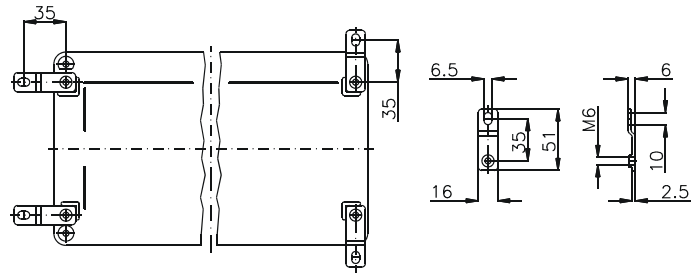
# Polyester Flange

## Accessories



**External mounting brackets**  
set = 4 pcs.

Order No. **10.03 11 02**



**Mounting plates**  
for fitting electro-mechanical components

Order No.	Type
<b>14.00 00 11</b>	14.01
<b>14.00 00 12</b>	14.02
<b>14.00 00 13</b>	14.03



**Front plate**  
with stud bolts and fastening screws  
(for dimensions, refer to mounting plate)

Order No.	Type
<b>14.00 00 27</b>	14.01
<b>14.00 00 28</b>	14.02
<b>14.00 00 29</b>	14.03

Type: **14.01 . .**

External dimensions: **170 x 270 x 135 mm**

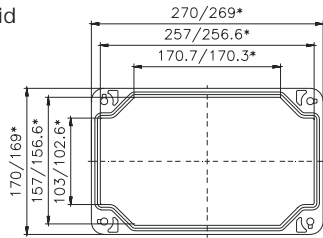
Weight: **1400 g**

DIN rail length in mm	max fitting length in mm	Mounting plate (thickness in mm)	External mounting bracket	Lid hinges	No. of flanges			
TS 15/35	240	3	•	•	2			
255	240	3	•	•	2			

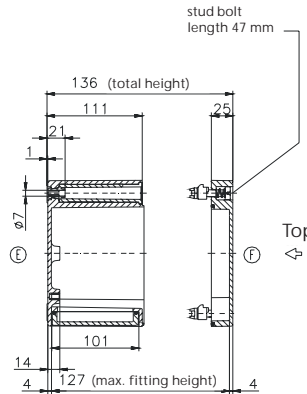
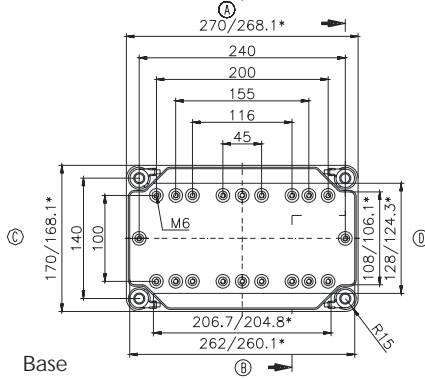
Maximum number of cable glands to *DIN 50262\**

M	Corner dim.	Side		PG	Corner dim.	Side		
		A/B	C/D			A/B	C/D	
12	17.25	63	33	7	17.25	63	33	
16	25.30	28	16	9	21.85	38	20	
20	27.60	22	12	11	25.30	28	14	
25	37.95	12	6	13.5	27.60	22	12	
32	48.30	8	4	16	31.05	18	9	
40	60.95	3	2	21	37.95	11	6	
50	69.00	3	1	29	48.30	8	4	
63	74.75	2	1	36	60.95	3	2	
					42	69.00	3	1
					48	74.75	2	1

Lid



\* = Conical form tapering downwards  
Free dimensions-tolerance to DIN 16901 - 130



Type: **14.02 . .**

External dimensions: **270 x 270 x 135 mm**

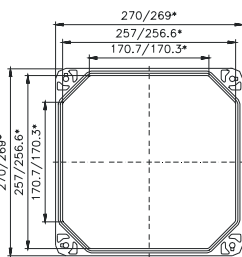
Weight: **2200 g**

DIN rail length in mm	max fitting length in mm	Mounting plate (thickness in mm)	External mounting brackets	Lid hinges	No. of flanges			
TS 15/35	200	3	•	•	4			
215	200	3	•	•	4			

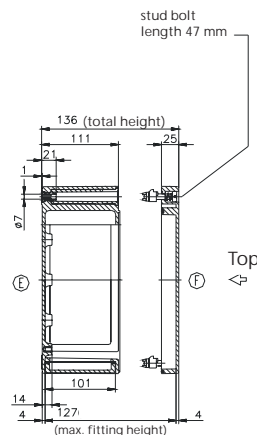
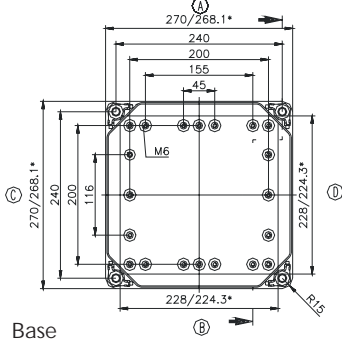
Maximum number of cable glands to *DIN 50262\**

M	Corner dim.	Side		PG	Corner dim.	Side		
		A/B	C/D			A/B	C/D	
12	17.25	63	63	7	17.25	63	63	
16	25.30	28	28	9	21.85	38	38	
20	27.60	22	22	11	25.30	28	28	
25	37.95	12	12	13.5	27.60	22	22	
32	48.30	8	8	16	31.05	18	18	
40	60.95	3	3	21	37.95	11	11	
50	69.00	3	3	29	48.30	8	8	
63	74.75	2	2	36	60.95	3	3	
					42	69.00	3	3
					48	74.75	2	2

Lid



\* = Conical form tapering downwards  
Free dimensions-tolerance to DIN 16901 - 130



Type: **14.03 . .**

External dimensions: **270 x 540 x 135 mm**

Weight: **4000 g**

DIN rail length in mm	max. fitting length in mm	Mounting plate (thickness in mm)	External mounting brackets	Lid hinges	No. of flanges			
TS 15/35	470	3	•	•	6			
485	470	3	•	•	6			

Maximum number of cable glands to *DIN 50262\**

M	Corner dim.	Side		PG	Corner dim.	Side	
		A* / B*	C / D			A* / B*	C / D
12	17.25	63	126	7	17.25	63	126
16	25.30	28	56	9	21.85	38	76
20	27.60	22	44	11	25.30	28	56
25	37.95	12	24	13.5	27.60	22	44
32	48.30	8	16	16	31.05	18	36
40	60.95	3	6	21	37.95	11	22
50	69.00	3	6	29	48.30	8	16
63	74.75	2	4	36	60.95	3	6
				42	69.00	3	6
				48	74.75	2	4

